



LEANHEAT

www.leanheat.com

An aerial, top-down view of a city rendered in a minimalist, white-on-white style. The buildings are simple rectangular blocks of varying heights, interspersed with clusters of small, rounded tree models. The overall aesthetic is clean and architectural, with soft shadows cast by the buildings onto the ground.

**Buildings have huge
untapped potential.**

 @Leanheat #Leanheat



**By including buildings
in the energy system...**



In Denmark

5000 MW

Potential to reduce peak power

An aerial photograph of a large, dark blue lake surrounded by a dense forest of green trees. A small wooden bridge crosses the lake in the center. The sun is reflecting off the water in the bottom right corner.

**600,000 Danes would live
CO2 neutrally**

An aerial photograph of a dense urban skyline, likely in China, featuring numerous skyscrapers and high-rise buildings. The image is overlaid with white text. The text reads: "In China, as much peak power could be shut down as 4000 large plants produce." The number "4000" is significantly larger than the other text.

**In China, as much peak power
could be shut down as**

4000

large plants produce.



60,000,000
people would live carbon-neutrally.

Leanheat - AI-based heating of buildings

Traditional building

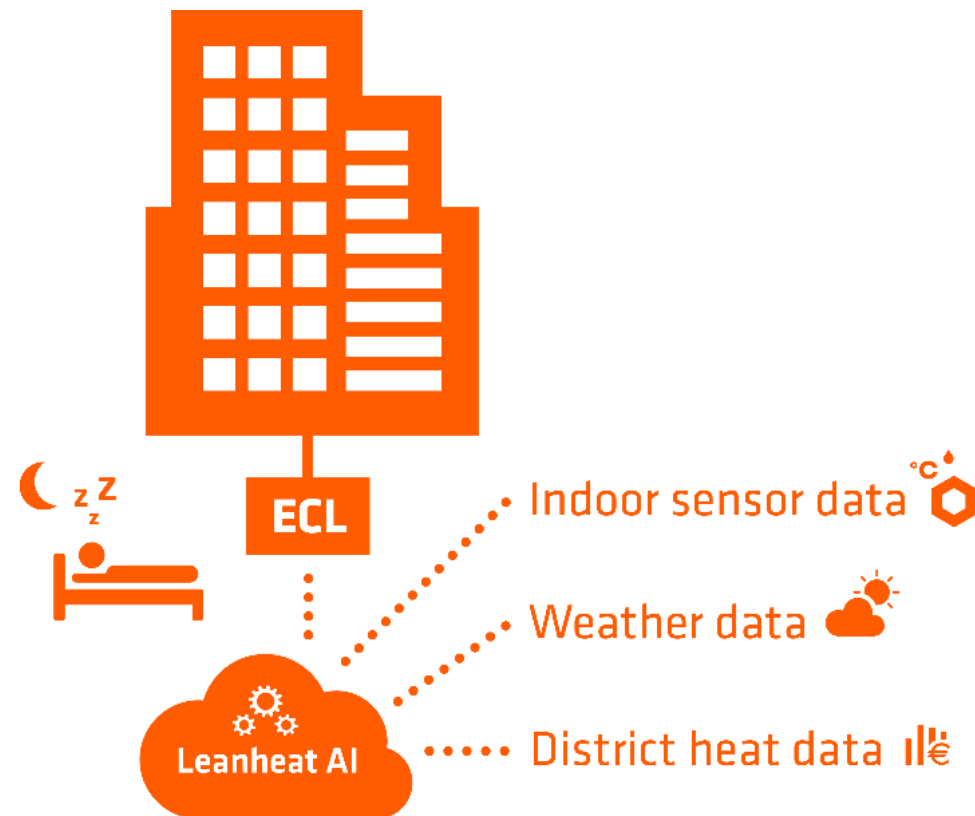


Heating curve + settings

$$T_{ref} = T_{VK} + (2,5 \times VK \times (T_{rum.set.spare} - 20)) + RI$$

- Manual configuration
- Not predictive

AI-controlled building

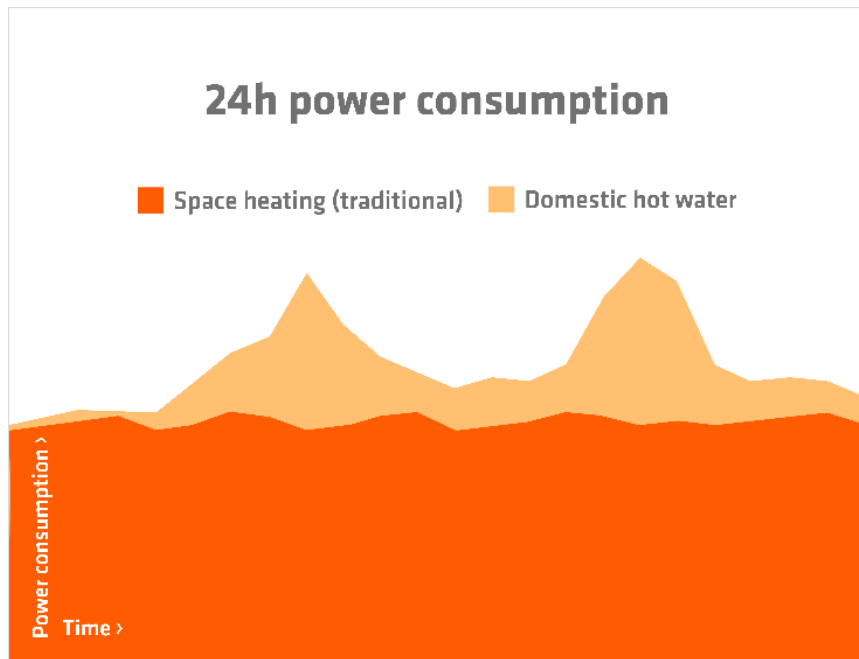


- + Adaptive (no configuration)
- + Predictive

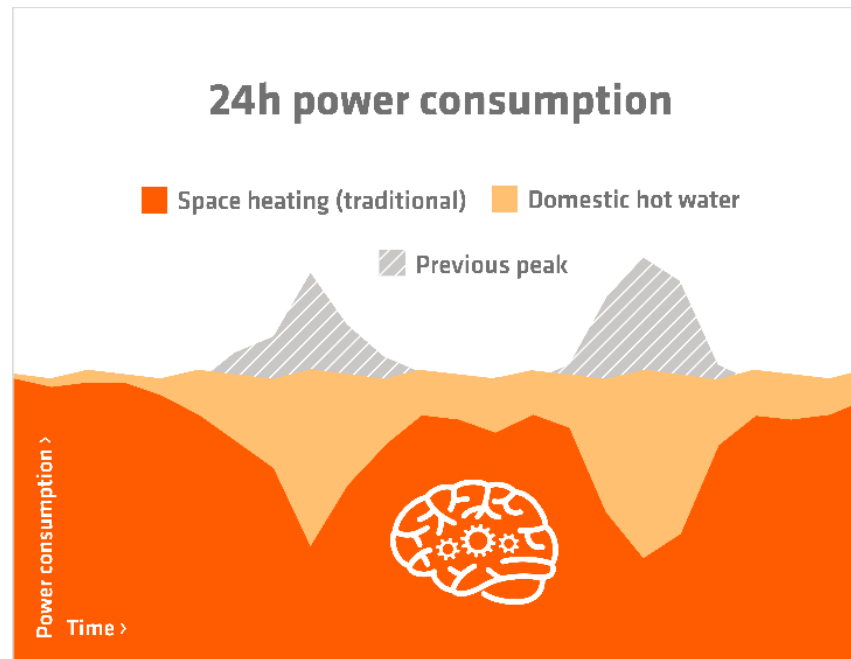
Leanheat AI for district heat companies

- cut peak power requirement by 10-30%

Traditional building automation

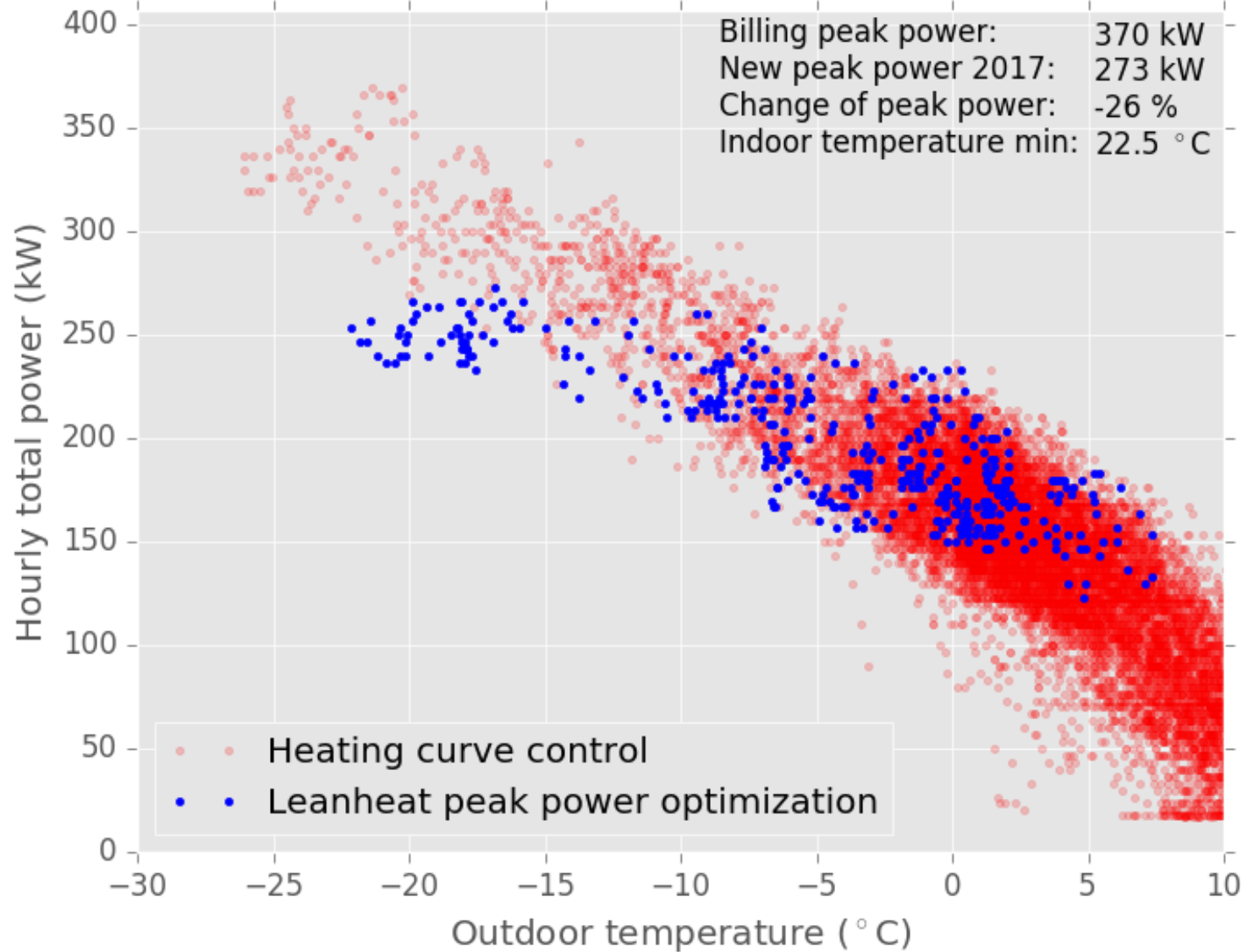


Optimized by Leanheat AI



Benefits

- + Cut peak power by 20%
- + Solve hydronic bottlenecks anywhere in the grid
- + New products and services
- + Optimal production with demand response

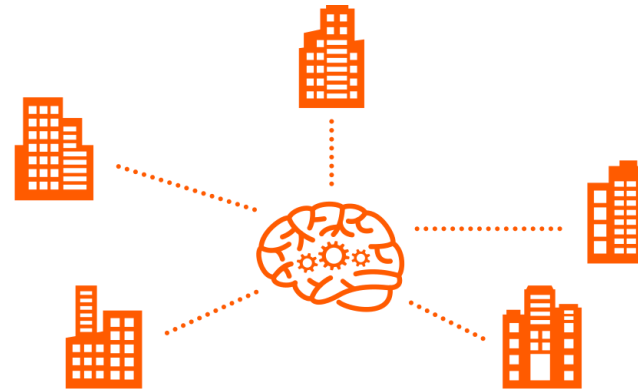


Compelling value proposition for district heat companies



1 MW peak power capacity

- 200-1000 kEur / MW
- Increased CO₂ emissions



1 MW Leanheat capacity

- + ~200 kEur/MW (~650 apartments)
- + Demand response benefits
- + Platform for new business
- + Share price with customer (0-100%)

**NET INVESTMENT
20% - 100% CHEAPER**



LEANHEAT

www.leanheat.com

 @Leanheat #Leanheat